

MTI'S REHEARSCORE®PLUS

USER'S GUIDE

TABLE OF CONTENTS

Introduction	1
The RehearScore®PLUS Window.....	2
Program Menu Buttons	3
Title, Song and Timeline.....	4
Playback Controls	5
Edit "Boxes and Buttons"	6
Measures, Tempos, Tranpositions	7
Parts and Accompaniment Control	8
Markers.....	11
Saving Your Arrangement.....	12
Frequently Asked Questions/Tech Support.....	13

REHEARSCORE®PLUS

You have chosen to use MTI's *Rehearscore®Plus* for your rehearsal process. The *RehearScore®Plus* is a powerful, yet simple-to-use rehearsal aide that will help your cast learn and rehearse their music easily and conveniently, vastly enhancing your rehearsal process, freeing you up for other work as the computer tirelessly teaches parts and plays rehearsals. *RehearScore®Plus* plays every note of the Piano/Conductor Score precisely the way the composer intended. Your copy of *RehearScore®Plus* can be loaded onto as many computers (both PC and MAC) as needed at no extra charge! It can augment your rehearsal accompanist during dance or staging rehearsals

and also act as a private pianist for each of your cast members, whether they are rehearsing in your theatre, a practice room or in their own homes. Because each singer's part has been recorded on a separate track, it can be played back with or without accompaniment (or louder or softer relative to the accompaniment).

There are many ways in which MTI's *RehearScore®Plus* can help with your rehearsal process. Below are seven ways that directors, musical directors and choreographers can use the *RehearScore®Plus* to make the rehearsal process easier and more productive.

- 1) Every cast member can have access to *Rehearscore®Plus* (Install the program on as many computers as you like)
- 2) Conduct dance or choral rehearsals (Vary the tempo and separate parts)
- 3) Find the right key- transpositions are easy (Transpose up and down in half-step increments)
- 4) Click and jump to any measure (the new 'time line' measure numbers match the score)
- 5) Add cuts and vamps
- 6) Save your changes
- 7) Works on Mac OSX & Windows Vista (all Windows machines)

Quick Start Instructions

Download the installation file to your computer. Double click on the install icon, and the entire *Rehearscore®Plus* will install onto your computer. Once the installation is complete, simply click on the "R" icon on your desktop, and you're ready to go!

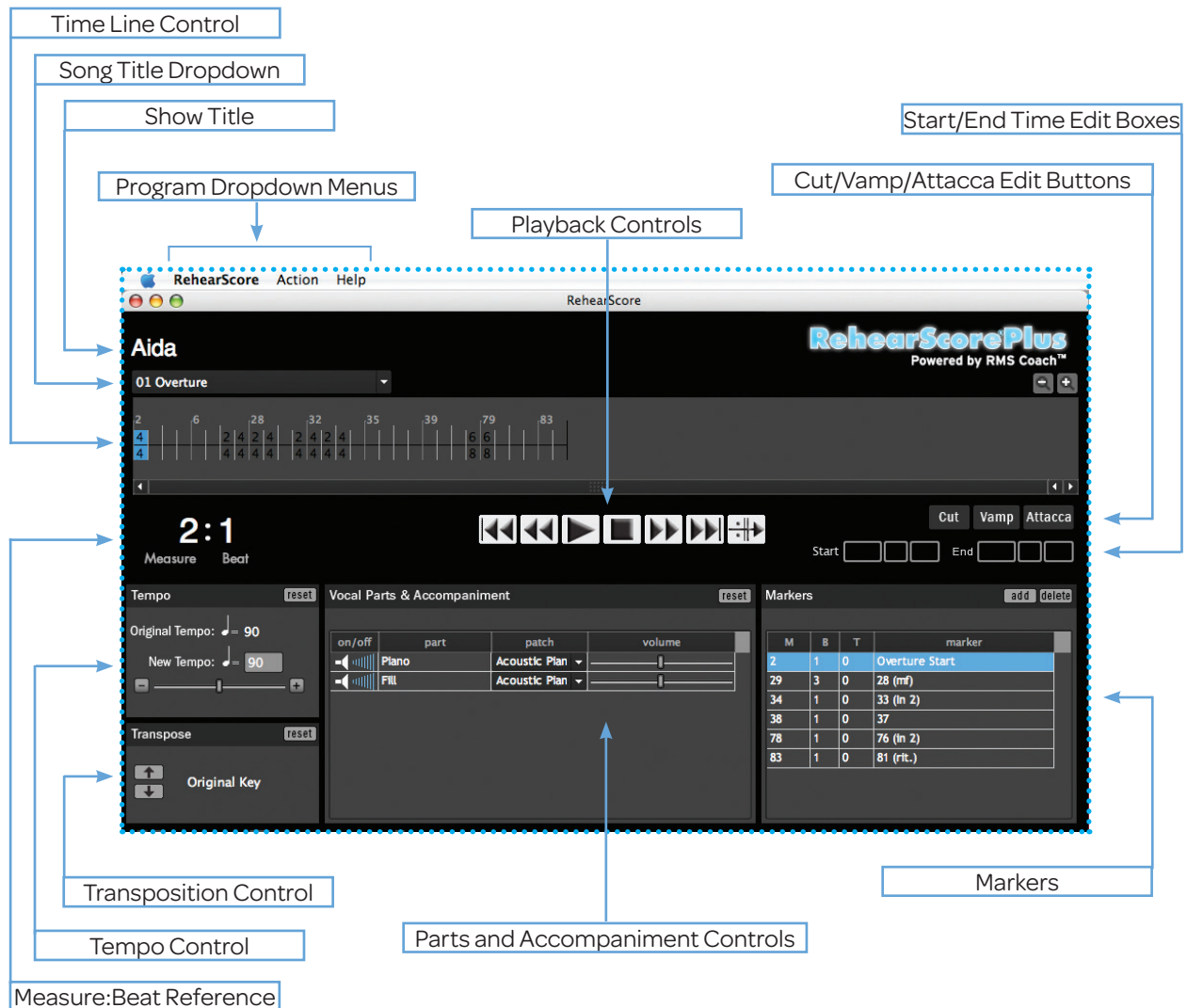
Please Note

Once you install your *RehearScore®Plus* program, it will expire after six (6) months. If you need to use *RehearScore®Plus* beyond that point, please call your MTI representative for an extension code. Extension codes will only be given for valid, booked productions.

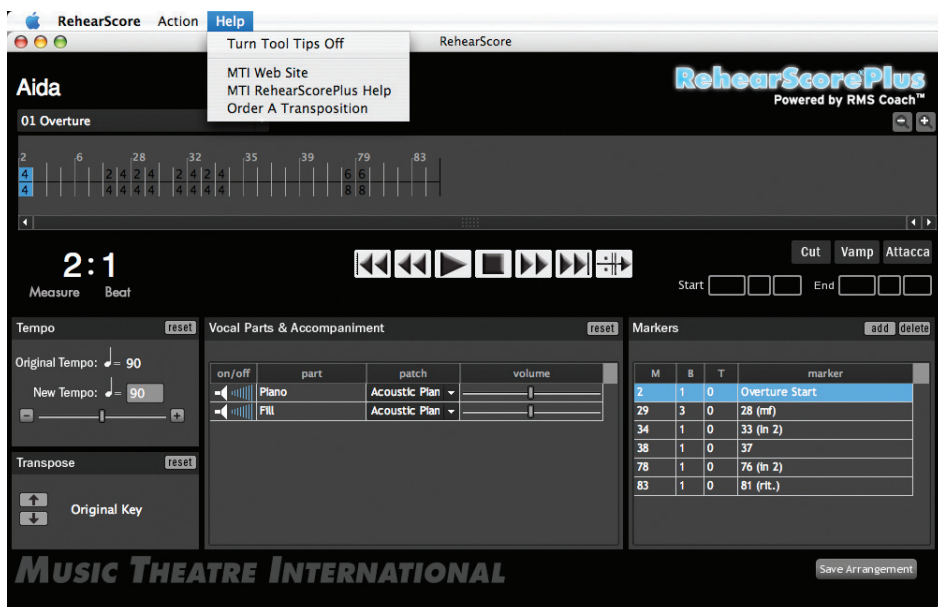
THE REHEARSCORE®PLUS WINDOW

All of the functions are accessible in one easy-to-operate window. Most of the controls are self-explanatory. The easiest way to learn how to use this program is simply to spend some time playing with it.

A map of the features is below, with each feature explained in more detail on the following pages.

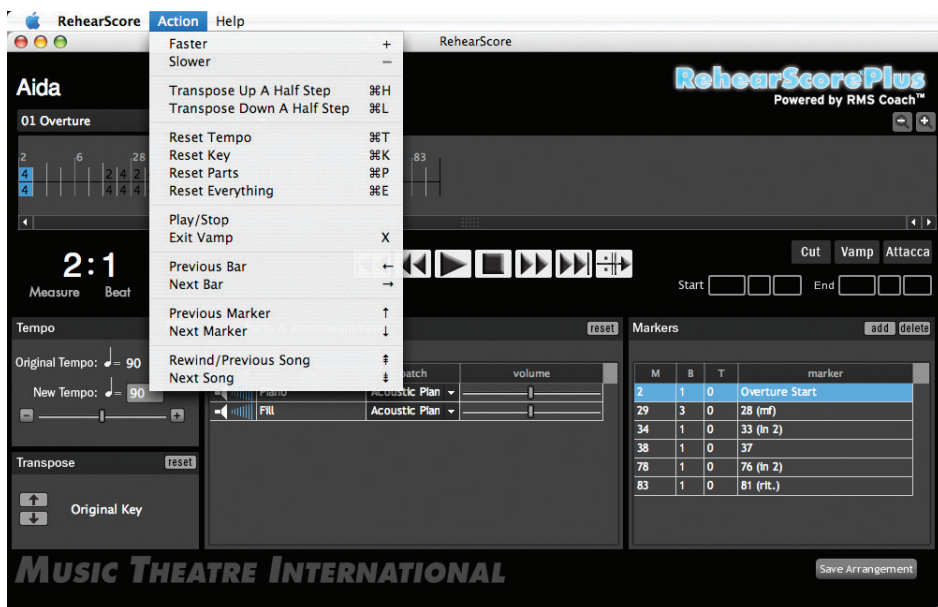


PROGRAM MENU BUTTONS



The Help Menu

- **Turn Tool Tips Off** - MTI's *RehearScore®Plus* utilizes "roll-over" tips as part of its interface. This button toggles the roll-over "tips" on and off.
- **MTI Website** - Click to go to our website if you are connected to the internet
- **MTI *RehearScore®Plus* Help** - Click to connect to help via the website



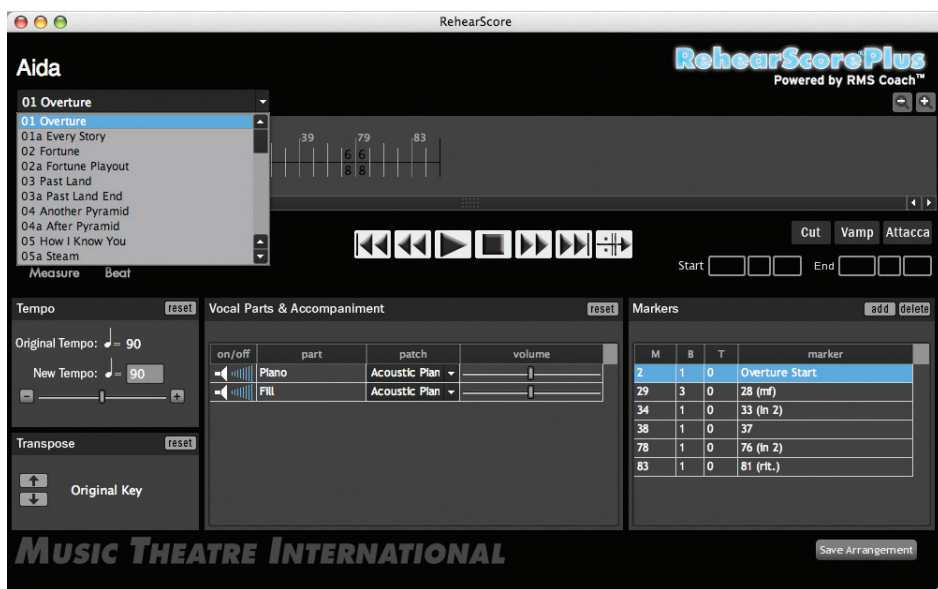
The Action Menu

Here you can find keyboard shortcuts for all of the actions available in the RehearScore®PLUS window.

The *RehearScore®Plus* Menu

A standard program menu to check which version of RehearScore®PLUS software is running, and a "Quit" button to end the program.

TITLE, SONG AND TIMELINE

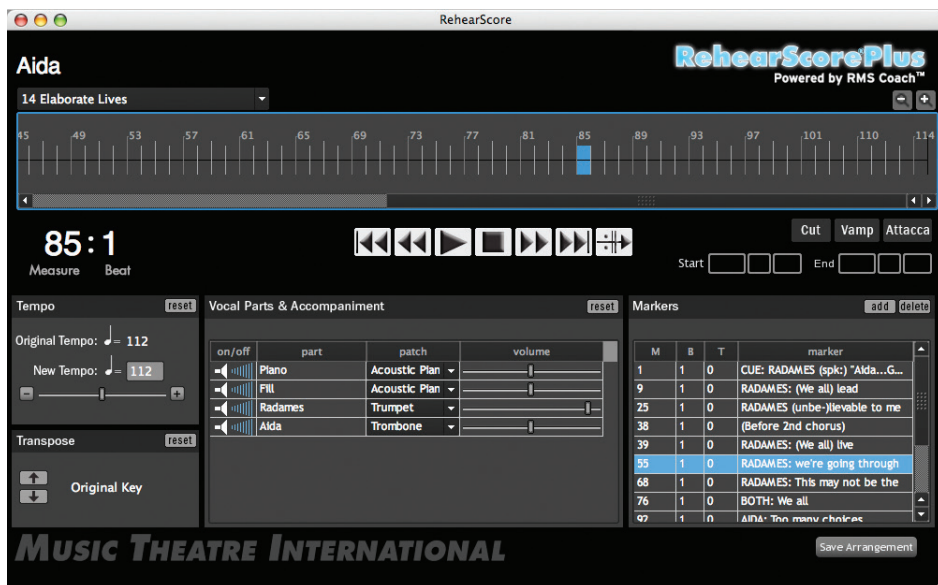


Show Title

Your Show automatically loads when you launch *RehearScore®Plus*!

Song Title Menu

You can quickly move to any song by simply selecting it in the Song Title Dropdown Menu. All songs in your show—from “Overture” to “Exit Music”—are included (including all scene change music as well). They are numbered exactly as they appear in the Piano/Conductor score.



The Timeline

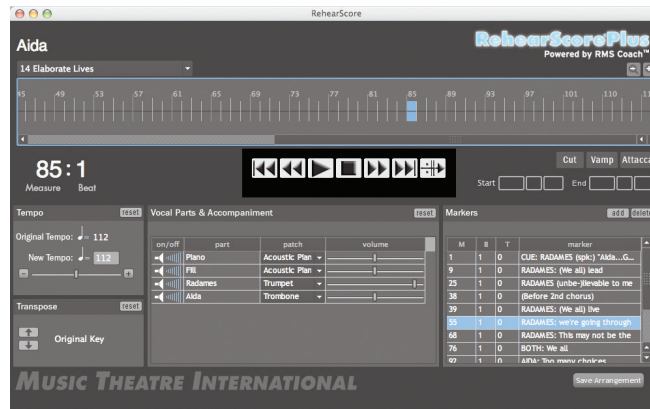
The TIMELINE is the heart of your score. On the TIMELINE you can:

- * Click and drag to highlight measures in order to edit them (set cuts and vamps), or conversely, click on edits to delete them.

- * “Double-click” on the timeline will immediately jump to that point in the song.

ALL of the measure numbers on the timeline MATCH the measure numbers in the Piano/Conductor score, even if they are “letters,” “numbers” or combinations of both!

PLAYBACK CONTROLS



Most of the Playback functions are similar to an ordinary CD or MP3 player—Stop, Play, Fast Forward, Rewind, Next Song and Previous Song. The button on the far right, however, is unique to RehearScore®PLUS—the Exit Vamp button. See descriptions below.



The PLAY and STOP Buttons

Click one to “PLAY” and one to “STOP.” Alternatively, the spacebar on the computer toggles “Play” on and off.



The REWIND and FAST FORWARD Buttons

Clicking the REWIND button jumps to the first beat of the previous measure. Alternately, clicking the FAST FORWARD button advances the song to the beginning of the next measure. Quick clicking in either direction moves you quickly back and forth through the score.



The PREVIOUS SONG and NEXT SONG Buttons

If you are at the beginning of a song, clicking the PREVIOUS SONG button will go to the beginning of the previous song. If you are in the middle of the song (past measure 1), clicking the PREVIOUS SONG button will go to the beginning of the song that is open. Clicking NEXT SONG will take you to the beginning of the next song in the song list.

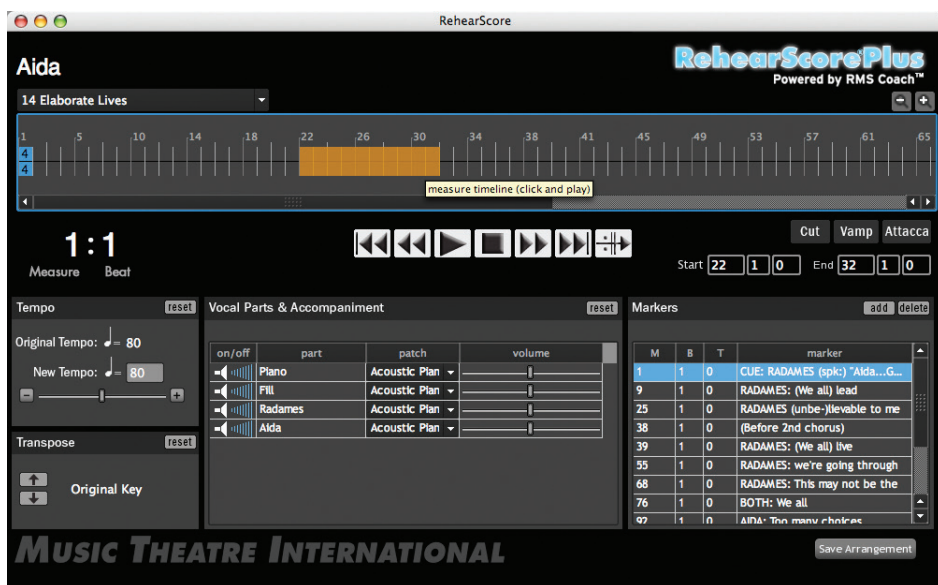


EXIT VAMP Button

Whether a VAMP is pre-programmed or programmed by you, the EXIT VAMP button will take the player out of the vamp on the next pass (or ignore the vamp if it hasn't begun to repeat).

SEE VAMP EDITING for more!

EDIT “BOXES AND BUTTONS”



Start/End Time Edit Boxes

When you select a part of the song (by clicking and dragging) to edit, the “start measure” and “end measure” appear in the START/END TIME EDIT BOXES. These default to beat one of each measure. You can override the default by actually typing alternate “beats” and “ticks” in these boxes, e.g., if you are cutting from beat two in measure 5 to beat 3 in measure 7, your Start/End Boxes would read:

Start: 5/3/000 End: 7/3/000

(This would play as 5/1, 5/2, 7/3, 7/4 - the number in the start box is the first count that is cut, and the number in the end box the first count that will begin playing after the cut).

Cut / Vamp / Attacca Buttons

* **Making A CUT** - highlight the measures and beats you want to cut, click the CUT button. The highlighted area becomes grey, with two arrows indicating the cut. The next time you play the song, Rehearscore®PLUS will skip over these measures.

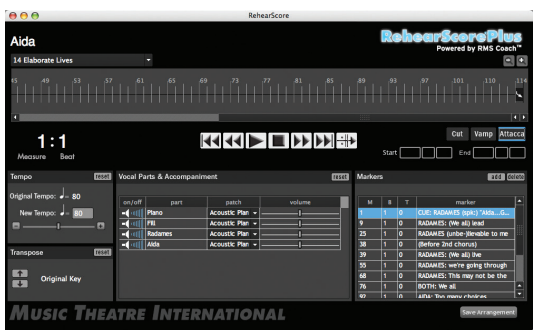
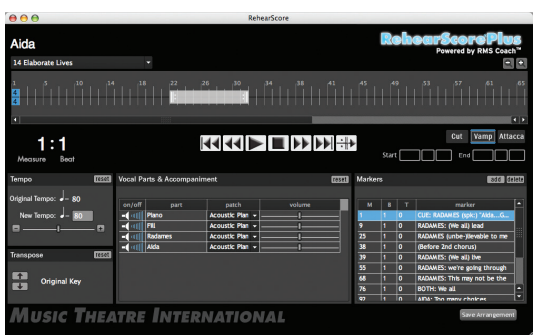
* **Setting A VAMP** - hitting the VAMP button once you have selected a specific set of measures, creates a VAMP. If there are VAMPS already indicated in the score, these will already be programmed into your Rehearscore®PLUS files. “VAMPS” are measures that will be repeated (over and over) until you hit the “EXIT VAMP” button. A VAMP is indicated in Rehearscore®PLUS by a grey highlighted area that contains “repeat markings” at each end (||: and :||).

NOTE: Vamps differ from “Repeats” in that they will continue to play over and over until you exit. Standard Repeats as they appear in the score are preprogrammed, and sometimes appear as a measure number with an appendix - i.e., if measures 2 - 4 are repeated once, they may appear in the Rehearscore®PLUS as measures number 2 - 3 - 4 - 2.1 - 3.1 - 4.1 (the “1” designating the repeat).

* **Setting An ATTACCA** - an ATTACCA is used when you don’t want a break between two songs. If an ATTACCA is indicated in the Piano/Conductor score, it should already be programmed into your Rehearscore®PLUS files. However, if you want to add an ATTACCA, simply highlight the final measure (or beat) of the song you want to jump from and hit the “ATTACCA” button. When you play the song, it will jump to the next song file and begin playing it immediately.

To Delete Any Cuts, Vamps Or Attaccas

(whether preprogrammed or not), simply click to highlight the edit, and hit the “delete” button on your keyboard!



MEASURES, TEMPO, TRANSPOSITIONS

Measure: Beat Reference

Clicks off beats and measures as the song file plays—an easy reference as to where you are in the score!

Tempo Control

You can slow down or speed up the tempo (without changing the pitch) in three ways:

- * Drag the slider bar left (to slow down) or right (to speed up)
- * Click on the “-” or “+” box at each end of the slider
- * Highlight the “New Tempo” number and type in a new value

The screenshot shows the RehearScorePlus interface for the score 'Aida'. The tempo control section on the left has a 'reset' button, 'Original Tempo' set to 80, and 'New Tempo' set to 51. A slider bar is positioned between these values. The 'Vocal Parts & Accompaniment' section shows parts for Piano, Fill, Radames, and Aida, each with an 'on/off' toggle, a patch selection (all set to 'Acoustic Plan'), and a volume slider. The 'Markers' section on the right lists various cues and lyrics with their corresponding measure, beat, and tempo markers. The 'Music Theatre International' logo is at the bottom.

Transposition Control

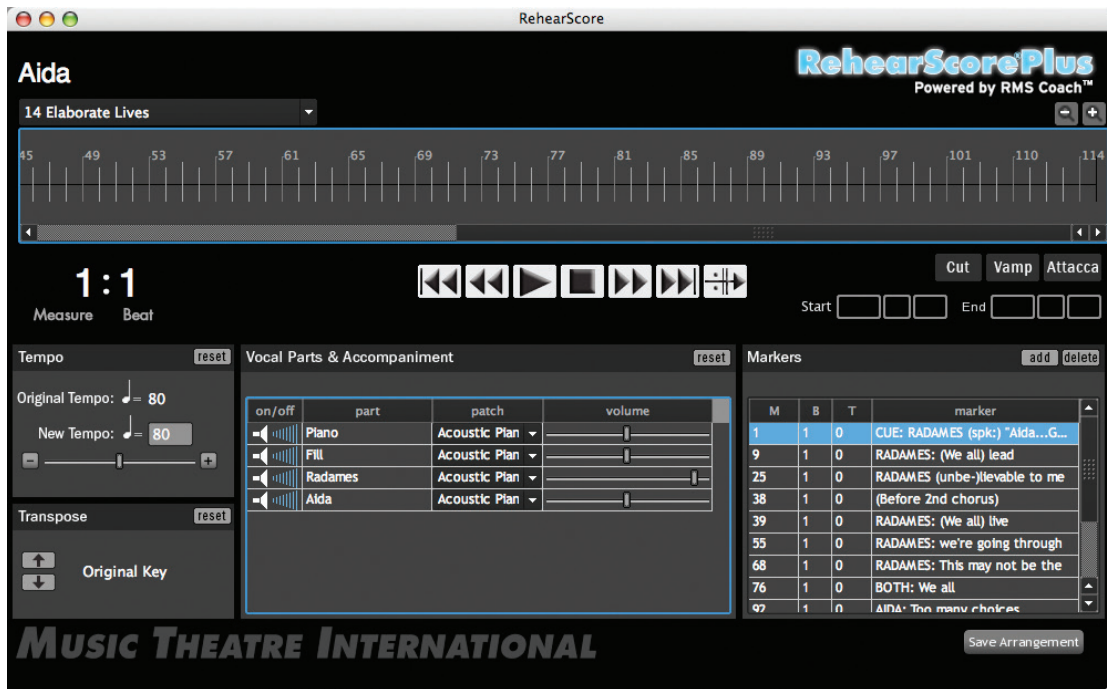
RehearScore®PLUS can transpose up and down an octave in each direction in half-step increments. To Transpose, simply click on the up or down arrow in the Transposition Control Box. Each click will take you one half-step up or down.

This screenshot is similar to the one above but highlights the transposition control. The 'Transpose' section on the left now shows 'Down a Major Second' selected, with a 'transpose down by one half step' tooltip visible. The 'Markers' section on the right shows the current marker is 'CUE: RADAMES (spk) "Aida...G...". The 'Music Theatre International' logo is at the bottom.

Make A Mistake? Want To Get Back To The Original Pre-Programmed Tempo Or Key?

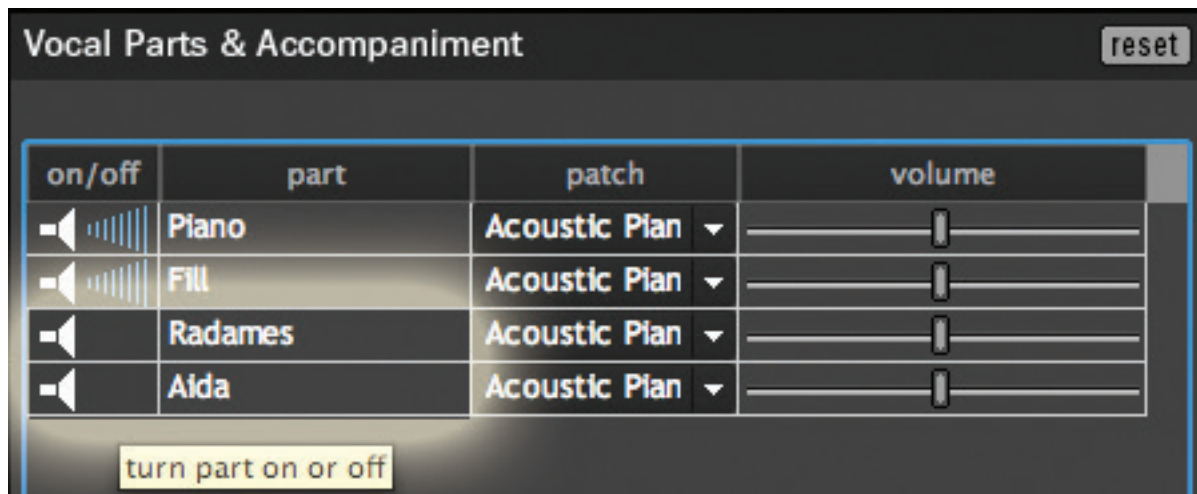
Simply hit the “RESET” button in the Control Boxes.

PARTS AND ACCOMPANIMENT CONTROL



The **Parts and Accompaniment Control Panel** is located in the center of the *Rehearscore®Plus* Player. This panel allows you to separate individual parts in several different ways:

- * Control the volume of any individual part or accompaniment track
- * Change the “instrument sound” (patch) of any individual part or accompaniment track
- * Mute any individual part or accompaniment track

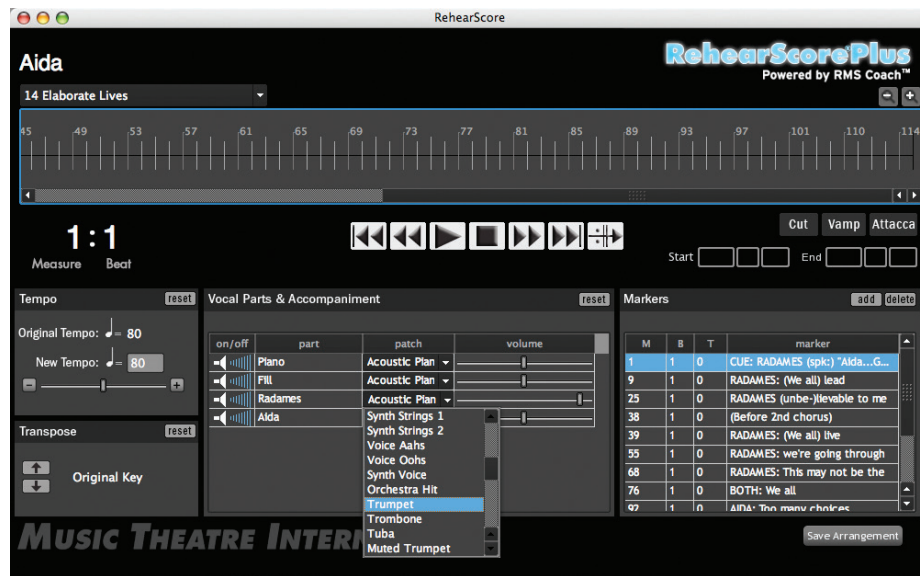


The ON/OFF Toggle

Click on the “Speaker Icon” to toggle parts on or off. Leave vocal parts on as your performers learn their songs, then turn the vocal parts off so they get used to performing with just the accompaniment.

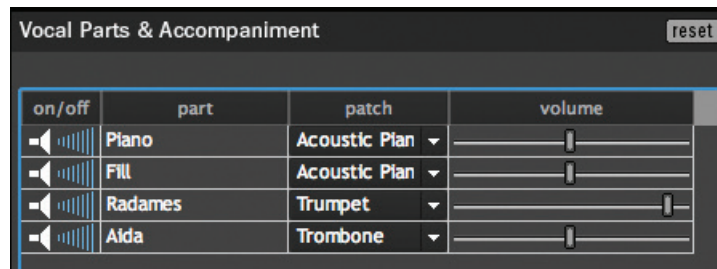
PARTS AND ACCOMPANIMENT CONTROL

...continued...



The PATCH Dropdown Menu

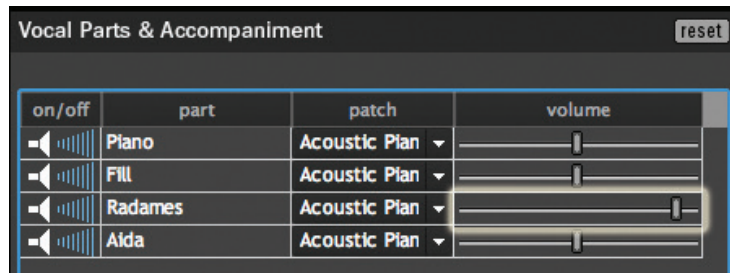
Click and hold to scroll through the PATCH dropdown menu. This allows you to play individual parts with different sounds. This can be helpful if actors are having problems separating their part from the other parts that are playing. The default for all parts is an Acoustic Piano sound.



Once a new sound is selected, it appears in the patch window.

PARTS AND ACCOMPANIMENT CONTROL

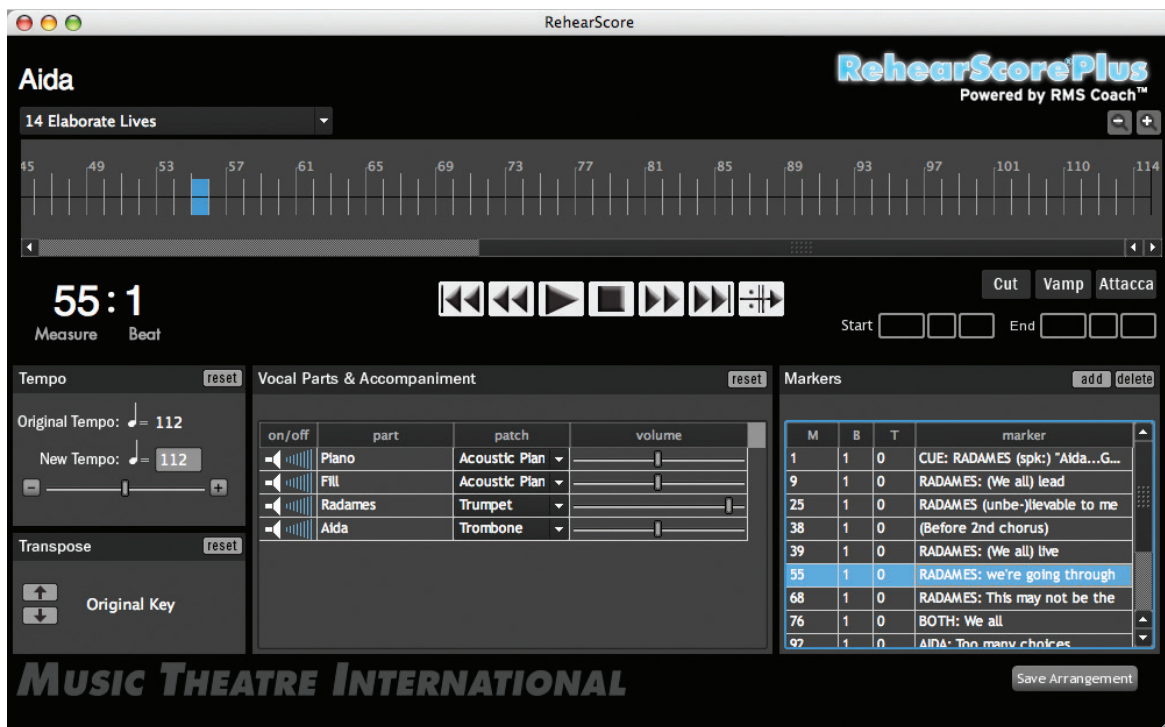
...continued...



The VOLUME Slider

Another way to make a part stand out from the others is to make that part louder than the rest. To change the volume of any individual part, simply click and drag the Volume slider. Dragging it to the right will make the part louder; dragging it to the left will make the part softer.

MARKERS



The MARKER Control Panel

Markers are a quick way to jump to a specific place in the score, especially for those times when you don't have a score near you and/or don't know the measure number you want to jump to or begin at. Markers generally have "cues" noted: either specific lyrics, or specific dialogue or action cues. Clicking once on the marker while the song is playing will cause the *RehearScore®Plus* to jump to that specific measure and beat. Clicking once on the marker while the *RehearScore®Plus* is dormant, will cause the *RehearScore®Plus* to begin playing at that measure when you hit the play button.

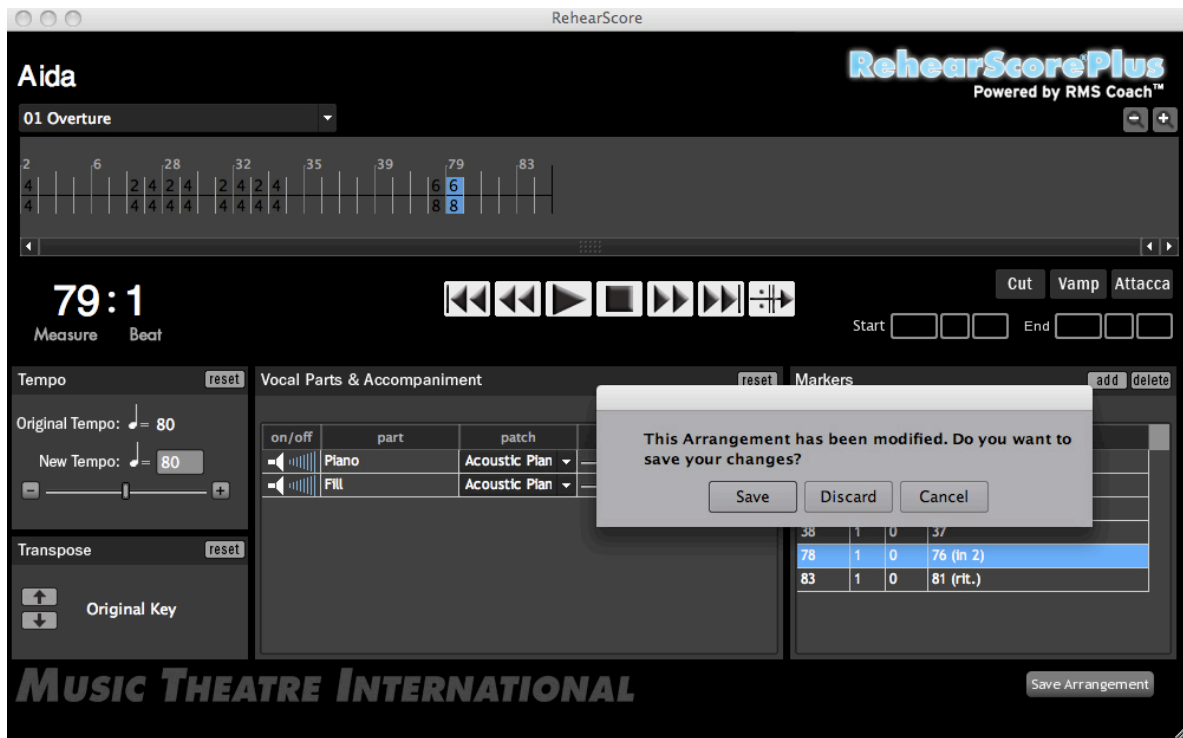
Editing MARKERS

You can edit markers by double-clicking on them—you can change the measure/beat/tick where they will jump and also change the actual cue line within the Marker.

By clicking on the ADD button, you can create your own markers.

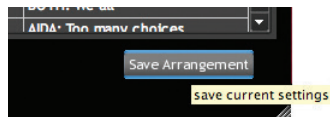
Clicking the DELETE button will delete any marker that is highlighted in your marker menu.

SAVING YOUR ARRANGEMENT



The SAVE Prompt

If you have made any changes to the song file(s) while in the *RehearScore®Plus* Program, you will be prompted before you close the program to either “Save” or “Discard” your changes. Clicking “Save” will save ALL of the changes you have made to ANY songfiles while you had the *RehearScore®Plus* open. Clicking “Discard” will erase ALL changes you have made to ANY songfiles while you had the program open.



The SAVE ARRANGEMENT Button

You may also save your changes as you make them, by clicking on the “SAVE ARRANGEMENT” button located in the lower right corner of the *RehearScore®Plus* window. Clicking on this button will save ALL of the changes you have made to ANY songfile while you had the *RehearScore®Plus* open since the last time you clicked on this button.

FREQUENTLY ASKED QUESTIONS (FAQ)

Question: Will the new *RehearScore®Plus* run on Macs running OSX?

Answer: Yes, the new *RehearScore®Plus* runs on all versions of OSX.

Question: Will the new *RehearScore®Plus* run on Windows XP? Will it run on Vista?

Answer: Yes, the new *RehearScore®Plus* runs on both XP and Vista.

Question: How do I create practice CDs or audio cassettes for my actors?

Answer: Rather than trying to create an audio CD or cassette for your actors, we strongly recommend that you share the *RehearScore®Plus* software with all of your actors. In this way, they can take the software home and place it on their home computers. There is no limit to the number of computers you can place the new *RehearScore®Plus* software on.

Question: How do I amplify the sound from my computer for rehearsals?

Answer: You can purchase an inexpensive mini-stereo to RCA cable from your local audio parts store. You need to connect the mini-stereo plug to your computer's headphone jack, and the RCA plug to your stereo sound system.

Question: My *RehearScore®Plus* expired. Can I get an extension?

Answer: Yes, you can get additional 6-month extensions. Simply call your MTI representative, and they will provide you with all the information that you would need to extend the time period on your *RehearScore®Plus* software.

Question: How do I mute a group of instruments in the *RehearScore®Plus*?

Answer: The new *RehearScore®Plus* follows the Piano/Conductor Score. If you need to mute a voice part, or if you need to mute the piano accompaniment, simply click the speaker image in the ON/OFF column in the Vocal Parts & Accompaniment section.

Question: I can't hear anything on my PC. What's wrong?

Answer: Most likely, the volume to your computer's internal synthesizer has been turned down. To adjust the volume, go to: Start<Control Panel<Sounds and Audio Devices. Once there, click on the Audio Tab. On the bottom of this pane, you will see a Volume Button in the MIDI Music Playback section. If you click on this button, a volume-control window will open up. You can adjust the volume to your computer's internal MIDI Synthesizer within this new window.

Question: Where are the MIDI files located?

Answer: Like the *RehearScore®Plus* application, the songfiles associated with *RehearScore®Plus* are proprietary information and are not accessible except from within the *RehearScore®Plus* program.

TECHNICAL SUPPORT

MTI's *RehearScore®Plus* has been designed to be easy-to-use and edit. If you have any questions, problems or suggestions, please contact us:

EMAIL: RehearScore@mtishows.com

PHONE: (212) 541- 4684

FAX: (212) 397-4684

WARNING!

REMEMBER: MTI's *RehearScore®Plus* is not to be used in performance. it is intended for rehearsal purposes only. if the program is used in a performance situation, the rights for your show may be revoked.

