

**SCENE 13: Mal and Evie's Dorm Room**

*(MAL pounds into the room, barely noticing EVIE, curled up and sad in her bed. MAL immediately starts packing, furious.)*

**EVIE**

What's the matter?

**MAL**

I'm leaving! All the work, and the rules, and the people—and the feelings—ugh, makes me sick!

**EVIE**

Yeah, me too—I can't believe I fell for Chad. What a zero.

**MAL**

Exactly! Come with me!

**EVIE**

But... what about the wand? And our parents? We can't go back empty-handed.

**MAL**

Jay and Carlos can get it for us!

**EVIE**

They can't get through a day without you. You're the leader.

**MAL**

Well, not anymore. Let's go.

**EVIE**

But what if I don't want to leave?

**MAL**

You just said, Chad's a zero.

**EVIE**

He is. But, turns out—I actually like school? I never got to study or learn new things on the Isle. My mom just wanted me to act dumb and pretty and get a boyfriend, but—

**MAL**

We're different than them.

#29 – *Space Between*

Evie, Mal

(MAL)

We'll never fit in here. No matter what.

**EVIE**

*(realizing)*

Is this about Ben? What happened?

**MAL**

I don't wanna talk about it.

*(EVIE can tell her friend is hurting. She softens.)*

**EVIE**

I DIDN'T KNOW WHAT YOU WERE GOING THROUGH  
I THOUGHT THAT YOU WERE FINE  
WHY DID YOU HAVE TO HIDE?

**MAL**

I DIDN'T WANNA LET YOU DOWN  
BUT THE TRUTH IS OUT  
IT'S TEARING ME APART  
NOT LIST'NIN' TO MY HEART  
I REALLY HAVE TO GO

**EVIE**

AND I WOULD NEVER STOP YOU  
EVEN THOUGH WE'VE CHANGED...

**MAL**

NOTHING HAS TO CHANGE

**EVIE**

WELL, YOU CAN FIND ME  
IN THE SPACE BETWEEN  
WHERE TWO WORLDS COME TO MEET  
I'LL NEVER BE OUT OF REACH  
'CAUSE YOU'RE A PART OF ME  
SO YOU CAN FIND ME IN THE SPACE BETWEEN  
YOU'LL NEVER BE ALONE  
NO MATTER WHERE YOU GO

**MAL, EVIE**

WE CAN MEET IN THE SPACE BETWEEN

**MAL**

Ya know, I feel sorry for Audrey. If she was smart like you, she wouldn't need a boy to make her feel good.

**EVIE**

But she's a princess. A real one. I'm just a knock-off wannabe.

**MAL**

Someone once told me a crown doesn't make you royalty.

**EVIE**

Huh. Wait... are you being... nice?

**MAL**

Me? Never.

**MAL, EVIE**

THERE ARE NO WORDS LEFT TO SAY  
I KNOW YOU GOTTA FIND YOUR PLACE  
BUT THIS IS NOT THE END, NO  
YOU'RE PART OF WHO I AM  
EVEN IF WE'RE WORLDS APART  
YOU'RE STILL IN MY HEART  
IT WILL ALWAYS BE

**MAL**

YOU AND ME

**EVIE**

YOU AND ME

**MAL, EVIE**

YOU CAN FIND ME IN THE SPACE BETWEEN  
WHERE TWO WORLDS COME TO MEET  
I'LL NEVER BE OUT OF REACH  
'CAUSE YOU'RE A PART OF ME  
SO YOU CAN FIND ME IN THE SPACE BETWEEN

**MAL**

YOU'LL NEVER BE ALONE

**EVIE**

NO MATTER WHERE YOU GO

**MAL, EVIE**

WE CAN MEET IN THE SPACE BETWEEN

**MAL**

Wish me evil?

**EVIE**

Evil!

# Space Between

Music & Lyrics by  
Shayna Mordue, Stephen Mark Conley,  
Tyler Shamy & Andrew C. Dodd

CUE: MAL: We're different than them.

MAL: (*cont'd*) We'll never fit in here. No matter what.

EVIE: (*realizing*) Is this about Ben? What happened?

MAL: I don't wanna talk about it.

Driving Ahead ♩ = 90

3

EVIE:

I did-n't know what

5

you were go - ing through. I thought that you were fine. —

6

7

MAL:

Why did you have to hide? — I did-n't wan-na let you

8

9

down, but the truth is out. — It's tear - ing me — a - part, —

10

11

MAL:

— not list-'nin' to — my heart. — I real-ly have to go.

12

13

14 (MAL):  
 ————— No-thing has to

15

EVIE:  
 And I would nev-er stop you. E-ven though we've changed...

slight pullback

16  
 change. ———

Well, you can find me in the space be-tween

$\text{♩} = 84$

17 (EVIE):  
 ——— where two worlds come to meet. ——— I'll nev-er be out of reach.

18

19  
 ——— 'Cause you're a part of me, so you can find me in the space be-tween.

20

21  
 ——— You'll nev-er be ——— a-lone ——— no mat-ter where you go.

22

23 BOTH:  
 ——— We can meet

24  
 in the space be-tween.

**MAL:** Ya know, I feel sorry for Audrey. If she was smart like you, she wouldn't need a boy to make her feel good.

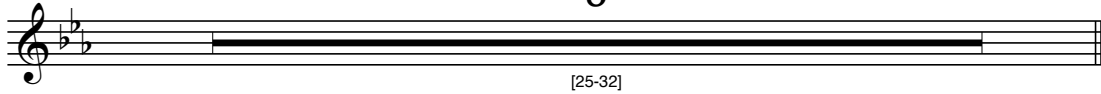
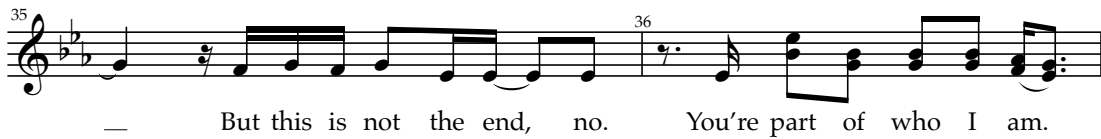
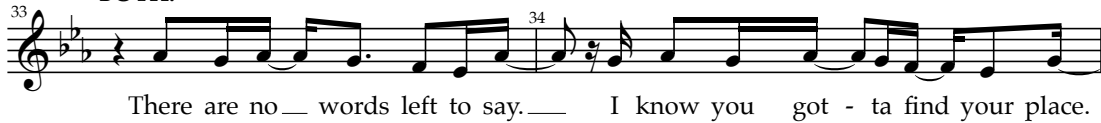
**EVIE:** But she's a princess. A real one. I'm just a knock-off wannabe.

**MAL:** Someone once told me a crown doesn't make you royalty.

**EVIE:** Huh. Wait... are you being... nice?

**MAL:** Me? Never.

8

**BOTH:****MAL:****(BOTH):****EVIE:**

43

— where two worlds come — to meet.

— where two worlds come — to meet.

44

— I'll ne-ver be out of reach.

45

— I'll nev-er be out of reach. — 'Cause

**BOTH:**

**(BOTH):**

46

you're a part of me, so you can find me in the space be-tween.

47

**MAL:**

— You'll nev-er be a-lone. —

48

**EVIE:**

No mat-ter where you go.

49

**BOTH:**

— We can meet in the space be-tween. —

50 *rit.*

51

52

**MAL:** Wish me evil?  
**EVIE:** Evil!